

1. PVTC Technical Requirements

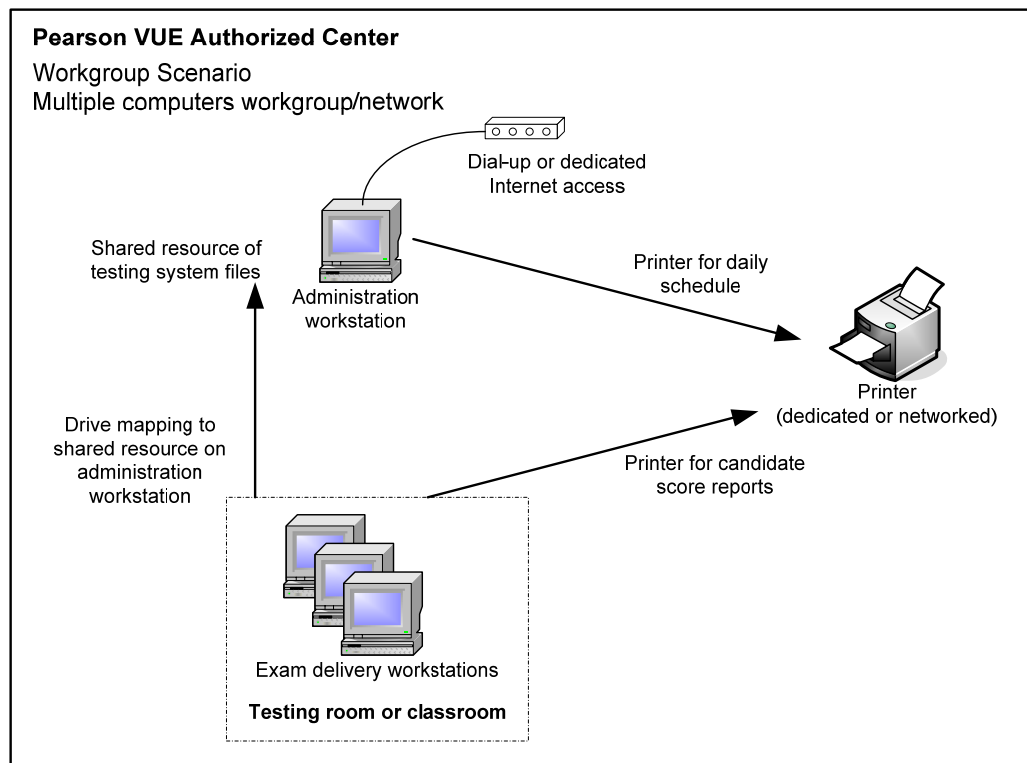
About the Installation Scenarios

The PEARSON VUE test center software may require the installation of the VTS software application, ESM application, or both applications. The testing system may be installed in one of two scenarios. Whichever scenario is installed, the hardware and software must meet Pearson VUE's minimum requirements as shown in [System Requirements](#) on page 3.

If you intend to have more than nine test delivery workstations, you must use the Server scenario. If you install the ESM application you must use a Server Scenario.

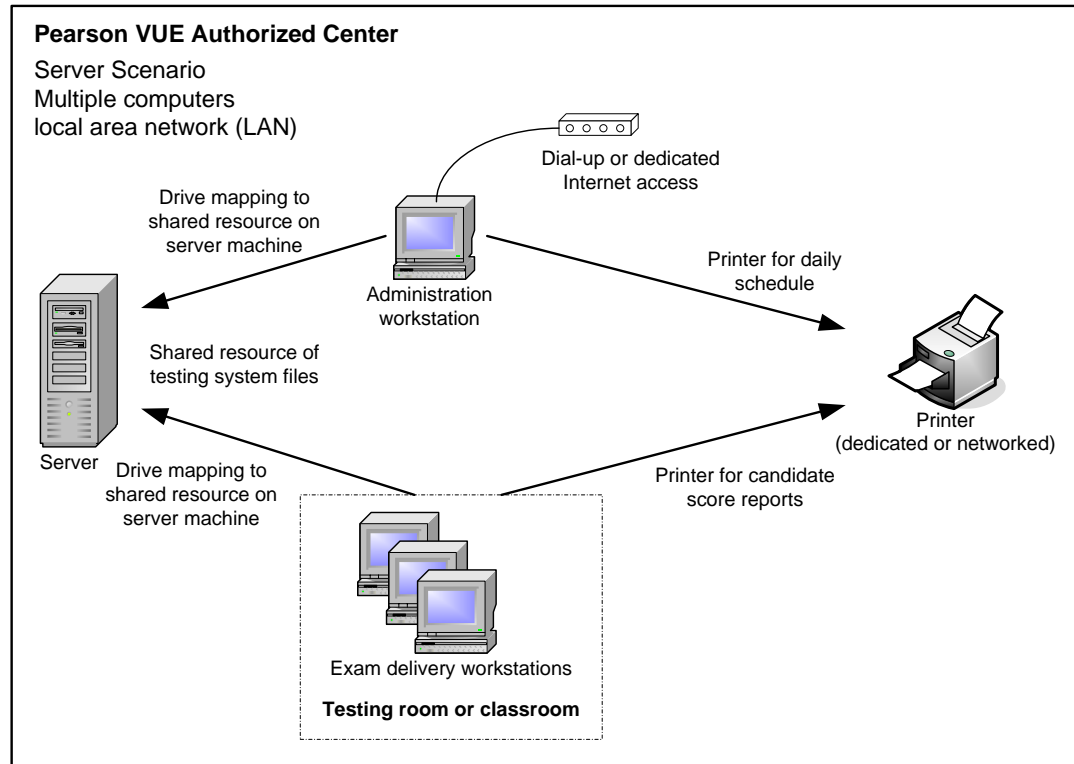
Workgroup Scenario Installation – Limited to 9 Workstations

In a Workgroup scenario installation, up to nine testing system workstations are connected through a local area network (LAN) or workgroup, and the administration workstation provides shared file storage. This is illustrated below.



Server Scenario Installation

In a Server scenario installation, all testing system workstations are connected through a LAN, and a file server provides shared file storage. This is illustrated below. (Server scenario refers to a setup type and is not related to an Operating System.)



System Requirements

Effective **November 1st, 2008**, the following pages list the minimum system requirements for installing and running the Pearson VUE Testing System, and for operating as a test center. The minimum requirements will change periodically based on the needs of our exam sponsors. Pearson VUE will notify your test center of any changes.

Administrator and Exam Delivery Workstations

Requirement	Administrator Workstation	Delivery Workstation
Processor	Pentium 3, 1 GHz	Pentium 4, 2 GHz
RAM	512 MB	512 MB
Hard Drive	4 GB available space	10 GB available space
Video Adapter	Medium color quality (16 bit) 1024 x 768 pixels 8 MB Video RAM	Highest color quality (32 bit) 1024 x 768 pixels 32 MB Video RAM
Display	15 inch (CRT or flat panel)	17 inch (CRT or flat panel)
Mouse and Keyboard	Required	Required
DVD-ROM Drive	Required	Not required
Audio Card	SoundBlaster compatible	SoundBlaster compatible
USB	2 ports required for mouse, & keyboard *2 ports for signature pad, and web camera if biometrics are collected	2 ports required for mouse and keyboard
Printer	Laser 600 dpi with Postscript support, accessible from administrator and delivery workstations	
Network Connection	100 Mbps, wireless networking not supported, <i>Novell not supported</i>	
Internet Connection	Broadband (DSL, cable or LAN/WAN) strongly recommended	
Operating System	Windows XP Professional (32 bit) with Service Pack 2 or later only, NTFS file system <i>Windows 2000 is no longer supported</i> Supported language: English (other languages supported on a limited basis)	Windows XP Professional (32 bit) with Service Pack 2 or later, NTFS file system (<i>preferred</i>) Windows 2000 Professional Supported languages: ENG, RUS, DEU, JPN, KOR, CHS and CHT
	<i>Windows Vista and 64 bit versions of Windows not currently supported</i>	
Additional Software Components	<ul style="list-style-type: none"> • Microsoft .NET Framework Version 1.1 and 2.0 with Service Pack 1 (x86) • Microsoft DirectX 9.0c 	
Internet Browser	Internet Explorer 6.0 SP 2	
Anti-Virus Software	Installed, enabled and regularly updated	

Shared File Storage

The shared file storage must be accessible to the administrator workstation and all exam delivery work-stations.

- ❖ In a Workgroup Scenario configuration, the shared file storage is located on the local hard drive of the administrator workstation.
- ❖ In a Server Scenario configuration, the shared file storage is on a separate file server.

Whichever scenario is installed, the following requirements apply to the shared file storage:

Requirement	Shared File Storage
Operating System	<i>Server Scenario:</i> Window XP, Windows 2003 Server or Windows 2000 Server 32 bit only, NTFS file system, with latest supported Service Pack
	<i>Workgroup Scenario:</i> See above under administrator workstation requirements
Hard Drive	4 GB available space
Power Supply	UPS recommended
System Backup	Performed daily
Anti-Virus Software	Installed, enabled and regularly updated

Software licenses

Test centers are required to have appropriate software licenses for all operating systems and application software installed on the computer equipment used for exam administration and delivery.

Pearson VUE Specific Hardware

Some exams may require the use of biometric capture equipment. Please consult with your Pearson VUE representative to determine if these components are required for your test center. If required these components must be purchased from Pearson VUE.

Requirement	Administrator Workstation
Web Camera	Logitech QuickCam Pro 9000 Webcam
Signature Device	Interlink Electronics ePad Signature Pad Model VP9801